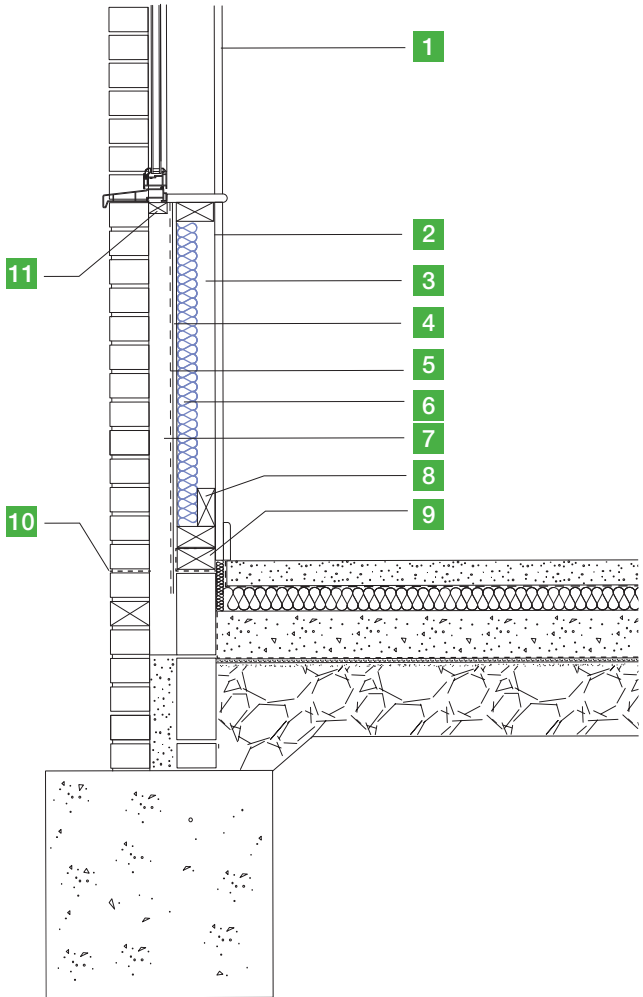


## Typical detail:

### New timber frame wall



1. Plasterboard and skim
2. Vapour control layer to be lapped over DPC at floor level and returned to window reveal and jambs
3. Unventilated air space
4. Sheathing ply
5. Breather membrane
6. WALLTITE CL100 insulation to achieve target U-value
7. 50mm air gap
8. Noggin to support plasterboard
9. Sill plate
10. DPC
11. Treated timber cill support fixed to timber frame, clad and protected in DPC with insulation set above

Allow for differential movement at ALL openings, i.e. at window cill and window heads, as recommended by the timber frame manufacturer/UKTFA/TRADA: to accommodate differential movement and provide weather resistant and durable joint.