



WALLTITE®

The airtight insulation solution

External roof insulation

Data sheet 2.4



External roof insulation Data sheet 2.4

Description

ELASTOSPRAY can be applied to the external surfaces of corrugated and profiled roof cladding. The in-situ application overcomes problem areas such as cracked roofing sheets and glazing, perished fixing bolt seals and gaps in the sheeting.

This practical way of insulating and weatherproofing a commercial building roof, provides a lightweight solution to condensation problems without disruption to production within the premises.

In these situations the ELASTOSPRAY needs to be provided with UV protection via a recommended membrane coating.

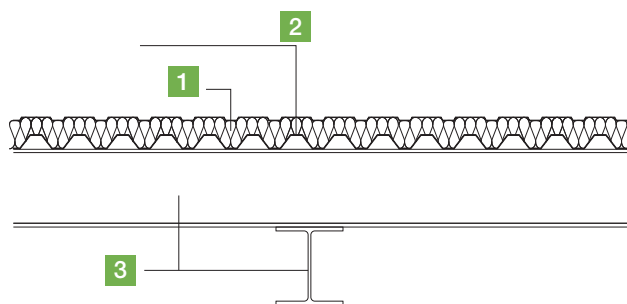
- Simple, seamless insulation of critical areas
- Suitable for virtually all substrate
- Economic due to 'fast track' installation
- Lightweight
- Adapts to any profile without gaps
- High compressive strength for occasional foot traffic

Certification

ELASTOSPRAY has undergone various performance tests. Certificates are available on request.

Typical detail:

External industrial roof



Technical data

Density > 42kg/m³

Compressive strength 240kPa

Reaction to fire E

U-values

| Thickness of WALLTITE (mm) | U-value (W/m ² K) |
|----------------------------|------------------------------|
|----------------------------|------------------------------|

| | |
|-----|------|
| 135 | 0.18 |
|-----|------|

| | |
|-----|------|
| 100 | 0.25 |
|-----|------|

| | |
|----|------|
| 50 | 0.46 |
|----|------|

1. ELASTOSPRAY insulation to achieve target U-value
2. Metal deck
3. Roof beams

