



WALLTITE®

The airtight insulation solution

A detailed cross-section diagram of a masonry wall. The wall is made of grey concrete blocks with visible mortar joints. Two vertical wooden studs are embedded in the wall. The space between the studs is filled with a thick, purple, textured insulation material. The top of the wall shows a rough, grey surface, possibly a roof or ceiling. The bottom of the wall is also shown with a rough, grey surface. The overall appearance is that of a well-insulated, refurbished masonry wall.

Refurbished masonry wall insulation (timber frame)

Data sheet 3.2

 **BASF**

We create chemistry

Refurbished masonry wall insulation (timber frame) Data sheet 3.2

Description

WALLTITE can be applied directly onto a solid masonry wall, between 90mm or 140mm timber studs, without the need for traditional adhesion promoters or mechanical fixings.

Mechanical and electrical services can be fixed between the foam and the plasterboard.

WALLTITE guarantees additional support and stability for the whole of the timber frame construction.

The resulting continuous insulation and air barrier system will provide a cleaner, healthier more comfortable environment for any "hard to treat" home situation.

Certification

BBA Certificate No. 11/4816.

WALLTITE has undergone various performance tests. Certificates are available on request.



Technical data

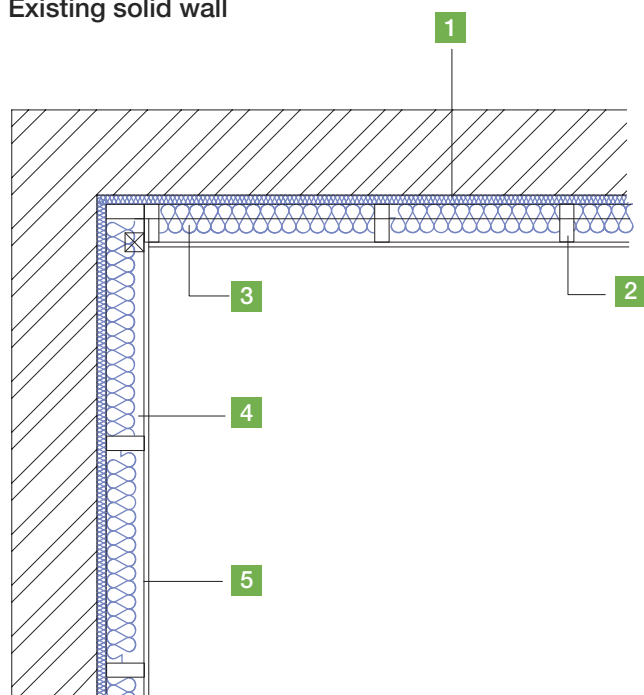
Specification	Dry lining of solid masonry wall
NBS clause	P10 15A
Lambda 90/90	0.025 to 0.028W/mk
Fire rating	Class 1 to BS 476 Part 7
μ	61.12

U-values

Thickness of WALLTITE (mm)	U-value (W/m ² K)
130	0.20
100	0.25
65	0.35

Typical detail:

Existing solid wall



1. 25mm WALLTITE behind studwork
2. Treated timber studs set off by wall by brackets
3. WALLTITE CL100 insulation between and behind studwork to achieve target U-value
4. Unventilated air space
5. 12.5mm vapourcheck wallboard and skim finish

At corners of internal and external walls to rooms, set frame to external wall back from corner a minimum of 25mm and set batten to line with vapour check wall boarding to receive board end to internal wall.

